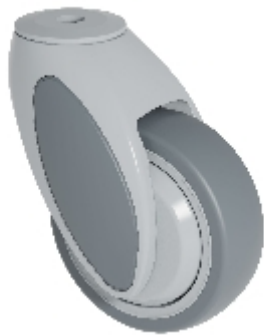









Swivel castor:

## KSL2-41C-L12 (VIVAX 2.0)



### Technical data

Diameter		100 mm
Wheel width		32 mm
Height		135 mm
Offset		46 mm
Bolt hole diameter		12 mm
Load capacity		100 kg
Weight		420 g

### Technical description

plastic castor

fork made of high-strength impact-resistant nylon

swivel fork head with sealed deep groove ball bearing



### Wheel

TPE tread (Shore A 87)

polypropylene wheel body

thread guard

ball bearing

non-oiling

on request further variants available