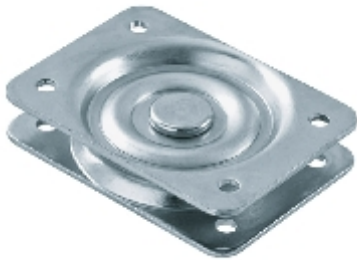



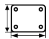
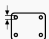
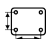


Plate ball bearing:

197B

On request



## Technical data

Height		19,5 mm
Top plate dimensions		95x70 mm
Top plate hole diameter		6,5 mm
Dist. between holes		75x45 mm
Load capacity		280 kg
Weight		324 g

## Technical description

double plate ball bearing

single-row ball race

zinc-passivated

